

## Who We Are

Benlycos Pvt. Ltd is an ODM providing hardware technology solutions for video broadcasting and Internet connectivity. Our clients include *Tamilnadu Police, Redbus, CommonFloor, LG, Doordarshan, MP Police, Ultratech Cements, TV18, YuppTV, Hindustan Petroleum, 24FramesDigital, Toshiba and Hindustan Unilever* among many others.

Our flagship product is ZifiLink, a device for network uplink and downlink aggregation. It allows users to combine up to 8 Cellular networks (2.5G, 3G and 4G) from any vendor/Internet Service Provider (ISP). ZifiLink aggregates bandwidth of all the cellular networks to give one reliable super-fast Internet connection. 8 torches provide brighter light than one.

ZifiLink is designed to solve the pain point of Health Care Industry, News Channels, Public Safety Organizations, video broadcasters, event managers and Bankers, who are looking for a reliable alternative for publishing live video or data feed without using expensive satellite based systems. This provides Internet connectivity where the feasibility for wired/wireless connection does not exist.

ZifiLink was awarded "*Most innovative product of the year 2015*" by Nasscom. ZifiLink can also be used in verticals like Media, Banking, Education, Home Land security, Public Transports etc.

## About ZifiLink

ZifiLink is an innovative product designed to address the limitations of bandwidth aggregation or lack of it, faced by all users. ZifiLink can be used by connecting multiple dongles of same or different ISPs with various technologies like 2G, 3G, and 4G to aggregate the speed of all networks to give you combined output which would be typically up to 8X.

Though ZifiLink was primarily designed to address the problems of live video streaming and narrow bandwidth, it can also be put to use in places where Internet connectivity itself is a challenge. It is an enabler via Internet connectivity. ZifiLink alternatively can be used in surveillance and also finds a place in all forms of streaming including data streaming in Industries like Media, Banking, Education, Transport, Police etc.

ZifiLink is an extremely user friendly device which automatically detects and connects to networks which translates to zero configuration.

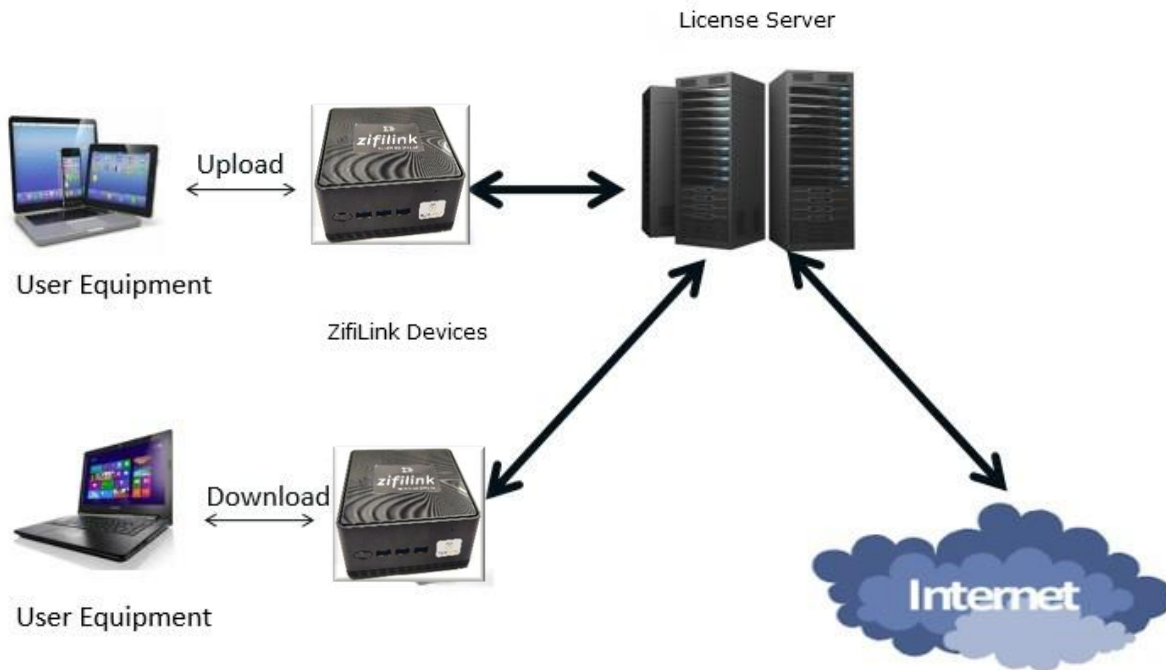
ZifiLink can handle all types of cellular technologies such as 2.5G, 3G and 4G from any operator, Ethernet-over-USB (EoUSB) and Wi-Fi to aggregate bandwidth.



## ZifiLink-5x

## ZifiLink Architecture

ZifiLink Architecture Diagram 1.0



## Specifications

### General

---

Dimension	132 x 118 x 56.4 mm with 75mm and 100mm
Weight	950g
Operating temp.	5°C ~ 45°C
Power supply	DC 19V = 3.42A

### Supported Networks

---

4G LTE (MiFi device and USB dongle)  
3G (HSPA+, HSUPA, HSDPA)  
2.5G (CDMA, EVDO)  
WAN via Ethernet-over-USB (EoUSB)

### Key Features

---

Zero configuration - automatically detect the ISP and connect to the cellular network.  
Auto update for new model USB dongles.  
Monitored and controlled through tablets, smartphones, and laptops over Wi-Fi or LAN.

### Network Interface

---

Wi-Fi hotspot  
1 - LAN Output

### Bonding Interface

---

Upto 5 USB dongles (2.5G, 3G, 4G)  
Upto 1 LAN Ethernet-over-USB (EoUSB)